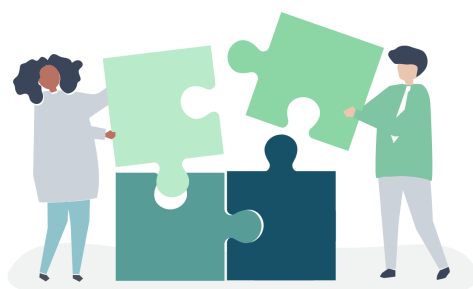


Friday 19th & Saturday 20th November 2021



Complex Trauma and The Law: Putting the Pieces Together

Presentations from the legal profession and
those with lived experiences

About the Workshop

The legal processes associated with claiming compensation for abuse can be quite opaque. The purpose of this workshop is to elucidate the different pieces of the jigsaw and clarify how they fit together.

The workshop will cover a range of topics including:

- The different civil & criminal options – costs and benefits of each
- What the process might look like for the client
- Ways in which a mental health professional might support their client

You should leave with an understanding of:

- The *legal practitioner's* part of the process
- The *clinician's* part in the process
- The *survivor's* experience of the process

Program

FRIDAY 19th NOVEMBER

8:30am - 8:45am	Registration
8:45am - 9:00am	Welcome – Mrs Sonia Smuts
9:00am – 10:30am	TBA
10:30am – 11:00am	Morning Tea
11:00am - 12:30pm	knowmore - Team presentation
12:30pm - 1:30pm	Lunch
1:30pm - 3:00pm	Criminal Injuries Compensation
3:00pm - 3:30pm	Afternoon Tea
3:30pm - 5:00pm	Lived Experience: Survivors & Carers

SATURDAY 20th NOVEMBER

8:30am - 9:00am	Registration & Housekeeping
9:00am - 10:30am	Criminal Court Process
10:30am – 11:00am	Morning Tea
11:00am - 12:30pm	Mediation
12:30pm - 1:30pm	Lunch
1:30pm - 3:30pm	Civil Court Process
3:00pm - 3:30pm	Afternoon Tea
3:30pm - 5:00pm	Lived Experience: Survivors & Carers

About the Presenters

Mr George Kingsley LL.M

Registrar of the District Court

In George's role as a Registrar of the District Court in Western Australia, he is responsible for a range of administrative and clerical court matters, including:

- Arranging listings and court sittings, including circuit sittings
- Maintaining court records, arraigning accused, empanelling juries, administering oaths, managing exhibits, and filing and lodging legal forms
- Liaising with the judiciary, legal profession, litigants, witnesses and other court users to ensure efficient court hearings
- Legal and research services
- Helping members of the public with queries

George has been involved in dispute resolution (either by adjudication or mediation) for 30 years, and brings significant knowledge about the process.

Ms Charmaine Holyoak-Roberts

Chief Assessor - Office of Criminal Injuries Compensation - Department of Justice

The Office of Criminal Injuries Compensation (OCIC) is a specialist tribunal providing a flexible and informal approach to determining applications for compensation by victims of crime in Western Australia.

The OCIC operates pursuant to the Criminal Injuries Compensation Act 2003 which provides for the payment of compensation to victims of offences committed after 22 January 1971 in some circumstances, and for related matters.

It also enables the recovery of compensation paid to an applicant from a convicted offender.

The Tribunal consists of the Chief Assessor and three Assessors all of whom are legally qualified with at least 8 years legal experience. The Assessors, who are supported by Case Managers and Recoveries Officers, act in an informal, responsive and expeditious manner.

Ms Renêa Capararo

Assessor - Office of Criminal Injuries Compensation - Department of Justice

Renêa is an Assessor of Criminal Injuries Compensation appointed in April 2019. Her background is as a solicitor in personal injuries, having worked in the area since 2001. Prior to joining the office of Criminal Injuries Compensation she was head of the Sexual Abuse team at Bradley Bayley Legal.

Mr Geoffrey Bourhill

Barrister

Geoff was admitted to legal practise in 1981 and has spent all of his professional life representing the interests of parties in litigation arising from personal injury, initially plaintiffs but for most of that time, defendants.

For the first 35 years his involvement was as solicitor, primarily on instructions from insurers. In 2016, he joined the independent bar and since has operated solely as a barrister.

In that role, since 2018 he has been involved in the conduct of claims by the survivors of complex trauma.

Tim Hammond

Barrister

Tim specialises in representing victims of asbestos disease and survivors of institutional child sexual abuse.

He also has expertise acting in medical negligence claims, workplace, motor vehicle and catastrophic injury cases and in employment & industrial relations matters.

From 2016 to 2018, Tim was the Federal Member for Perth.

Greg Boland, Managing Lawyer, Perth Office and his multidisciplinary team

knowmore

knowmore was established by the Australian Government in response to the Royal Commission into Institutional Responses to Childhood Sexual Abuse, helping people apply to the National Redress Scheme or referring them to a panel of law firms for advice on other options like a common law claim, Criminal Injuries Compensation or other avenues of compensation.

knowmore stands out with their multidisciplinary approach, including the services of a lawyer, a counsellor/social worker, an Aboriginal Engagement Adviser and Financial Counsellor.

Survivors with a lived-experience of Complex Trauma

Various perspectives

There will be 7 survivors talking about their lived experiences with complex trauma, and the ways in which they have navigated the legal process.

As a survivor, they each bring a unique perspective. Their varied experiences will give anyone supporting a survivor through a legal process some insight into what helped and what hindered.

Details

Covid:	In the case of a COVID-19 lockdown, presentations will be moved on-line and a link to the platform will be emailed to you prior to the event
Dates:	Friday 19th November 2021 from 8:30am to 5:00pm Saturday 20th November 2021 from 8:30am to 5:00pm
Registration:	Registration opens on Friday 1st October and closes Tuesday 16th November 2021
Venue:	The Newman Siena Centre, 33 Williamstown Rd, Doubleview WA 6018
Catering:	Tea and a light lunch will be provided Please advise special dietary requirements at time of registration
Cancelation Policy:	100% refund for cancelations before 30th October 50% refund for cancelations between 31st October and 9th November 20% refund for cancelations between 10th and 15th November No refunds for cancellations after the 16th November, but you can transfer your registration by providing us with the contact details of the attendee coming in your place (please note any special dietary requirements for this person cannot be accommodated as the catering order will already have been placed)
Workshop Enquiries:	Vivien Bainbridge vivien.bainbridge@complextraumawa.org.au
General Enquiries:	Sonia Smuts sonia.smuts@complextraumawa.org.au
Workshop Fees:	\$750 for non members \$500* for COTWA General or Clinical members \$300* for members listed on the COTWA Directory <i>* Members need to be logged in to the members area in order to get the member rate applied.</i>
Options to save on the Workshop Fees:	If you are not yet a member of COTWA This is the perfect opportunity to sign up as you'll save \$100 off the non-member workshop fee (\$150 COTWA membership fee & \$500 workshop fee for members = \$650). If you are a Clinical Member of COTWA Register on the COTWA directory, and save \$200 off the Members workshop fee To find out about the membership benefits and eligibility, please visit our website - www.complextraumawa.org.au/join-cotwa/

Disclaimer

The information in this workshop is general in nature and should not be relied on. You should always seek your own professional advice. The views expressed are those of the presenters and may not represent the views of COTWA.